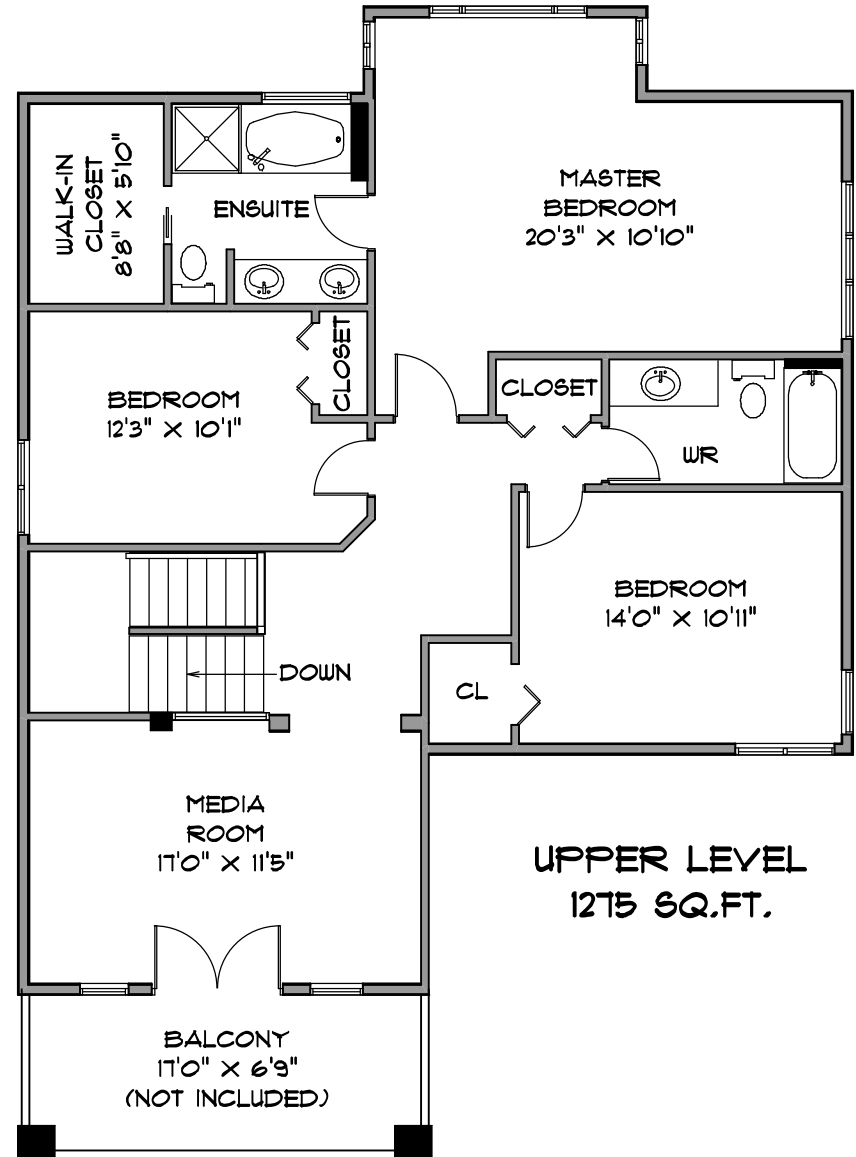
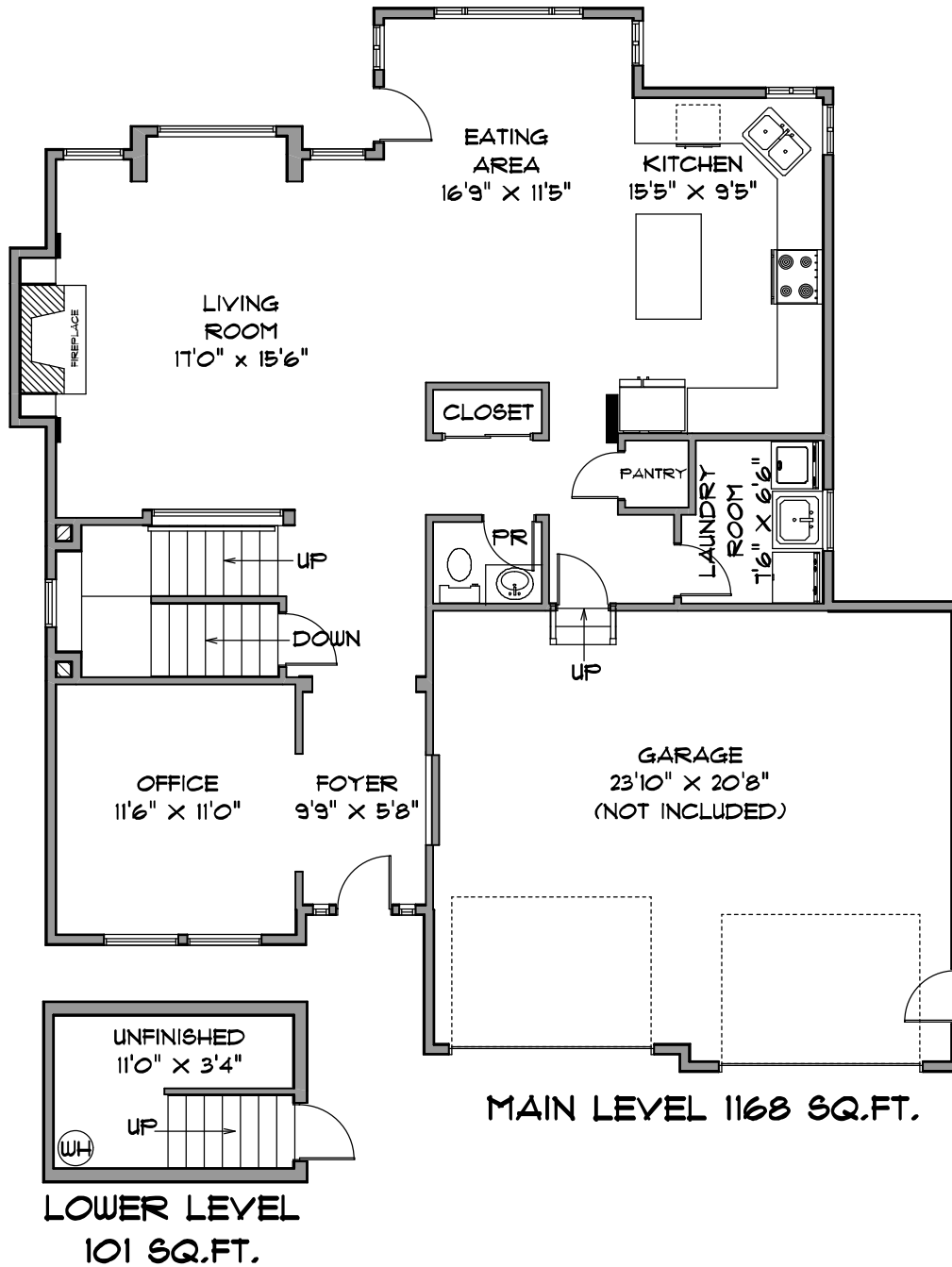


19454 SUTTON AVENUE
PITT MEADOWS

TOTAL FINISHED AREA 2443 SQ.FT.
GARAGE 508 SQ.FT.
UNFINISHED 101 SQ.FT.

MICHAEL LEPORE
604-295-3974
www.AccoladeRealEstate.ca



MEASUREMENTS SHOULD BE CONSIDERED APPROXIMATE
AND ARE FOR PROMOTIONAL USE ONLY.
E & O Insured
778-231-6542 MAY 2010

